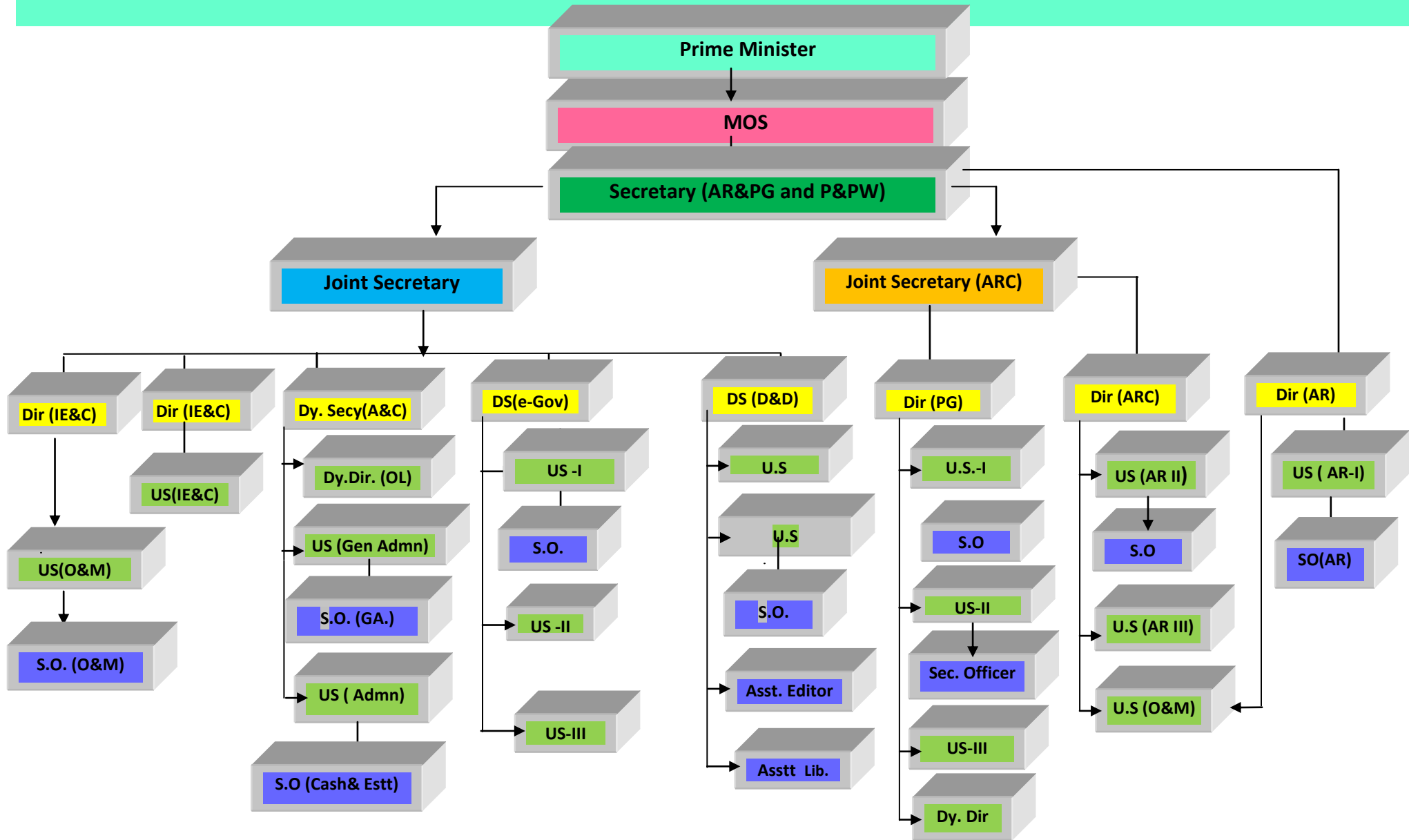


ORGANISATIONAL CHART OF DEPARTMENT OF ADMINISTRATIVE REFORMS AND PUBLIC GRIEVANCES as on 15.12.2011



- N.B.-1: PG & IE&C Divisions headed by the same Director.
 2: US (O&M) reporting to Director (ARC) for modernization work.
 3: US (O&M) reporting to Director (AR) for AR initiatives.